




SYMETRA

SYMETRA



# **MEDIUM WEIGHT JACKETS**

Ideal for the whole team. The technical fabrics and stylish designs make these jackets ideal to wear in a moderate climate.



ALT-CEJ

*Mens Celsius Jacket*

**Fabric** 100% polyester, 50D PVC with milky coating, lined in micro polar fleece • water resistant fleece lined jacket  
 • full zip • inner pocket • elasticated cuffs with velcro closure  
 • welt side pockets



STANDARD FIT

HALF CHEST (CM)

S	M	L	XL	2XL	3XL	4XL	5XL
57	60	63	66	69	72	75	78





MEDIUM WEIGHT JACKETS

MENS & LADIES STYLES LINED IN MICRO POLAR FLEECE

ALT-CEJL

### Ladies Celsius Jacket

**Fabric** 100% polyester, 50D PVC with milky coating, lined in micro polar fleece • water resistant fleece lined jacket  
 • full zip • inner pocket • elasticated cuffs with velcro closure  
 • welt side pockets

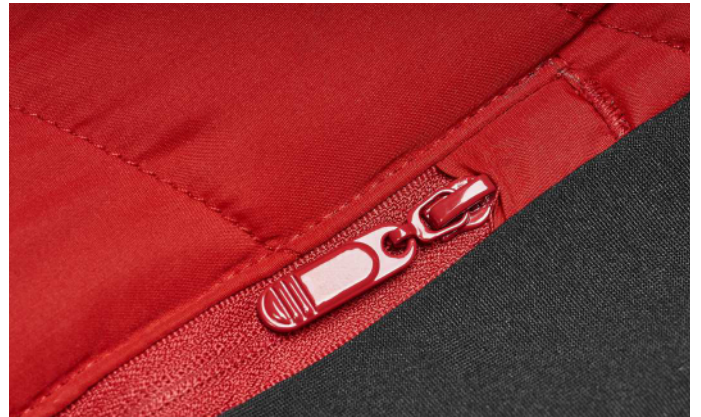
BL N R RB SB

STANDARD FIT

HALF CHEST (CM)

S	M	L	XL	2XL	3XL	4XL
51	54	57	60	63	66	69





ALT-ANM

*Mens Andes Jacket*

Weight 215g/m<sup>2</sup> Fabric body: 100% polyester pongee with PA coating • contrast panels: 96% polyester, 4% spandex • lightly padded jacket features unique diagonal stitch detail on front and back • semi-elasticated cuffs

BL N R RB

STANDARD FIT

HALF CHEST (CM)

S	M	L	XL	2XL	3XL	4XL	5XL
50	53	56	59	62	65	68	71





UNIQUE DIAGONAL STITCH DETAIL ON FRONT & BACK

ALT-ANL

Ladies Andes Jacket

Weight 215g/m<sup>2</sup> Fabric body: 100% polyester pongee with PA coating • contrast panels: 96% polyester, 4% spandex • lightly padded jacket features unique diagonal stitch detail on front and back • semi-elasticated cuffs

BL N R RB

STANDARD FIT

HALF CHEST (CM)

S	M	L	XL	2XL	3XL	4XL
45	48	51	54	57	60	63





ALT-PAM, ALT-PAL & ALT-PAK ARE AVAILABLE IN THE 6 COLOURS SHOWN ON THIS PAGE





# Our bestselling Softshell IS A TOP PICK FOR THE WHOLE TEAM

MEDIUM WEIGHT JACKETS

## ALT-PAM

### Mens Palermo Softshell Jacket

Weight 300g/m<sup>2</sup> Fabric 100% polyester knit bonded with micro fleece • full zip • zip pockets • elasticated binding at sleeves



STANDARD FIT

HALF CHEST (CM)

S	M	L	XL	2XL	3XL	4XL	5XL
54	57	60	63	66	69	72	75

## ALT-PAL

### Ladies Palermo Softshell Jacket

Weight 300g/m<sup>2</sup> Fabric 100% polyester knit bonded with micro fleece • full zip • zip pockets • elasticated binding at sleeves



STANDARD FIT

HALF CHEST (CM)

S	M	L	XL	2XL	3XL	4XL
48	51	54	57	60	63	66

## ALT-PAK

### Kids Palermo Softshell Jacket

Weight 300g/m<sup>2</sup> Fabric 100% polyester knit bonded with micro fleece • full zip • zip pockets • elasticated binding at sleeves



STANDARD FIT

HALF CHEST (CM)

AGE:	4	6	8	10	12	14
CM:	35	38	41	44	47	50



NEXT GENERATION DIGITAL PRINT





ALT-COJ

### Mens Colorado Jacket

**Fabric** 100% polyester outer, 210T polyester lining, polyester wadding • lightly padded bomber jacket • elasticated ribbing on hem and cuffs • slanted zipped pockets • trendy top stitching detail

BL C CAM KH MG N

STANDARD FIT

HALF CHEST (CM)

XS	S	M	L	XL	2XL	3XL	4XL	5XL
50	54	58	62	66	70	74	78	82

ALT-COJL

### Ladies Colorado Jacket

**Fabric** 100% polyester outer, 210T polyester lining, polyester wadding • lightly padded bomber jacket • elasticated ribbing on hem and cuffs • slanted zipped pockets • trendy top stitching detail

BL C CAM KH MG N

STANDARD FIT

HALF CHEST (CM)

S	M	L	XL	2XL	3XL	4XL
51	54	57	60	63	66	69



MEDIUM WEIGHT JACKETS



**ALT-HUD**  
*Mens Hudson Jacket*

- Fabric** 100% polyester 40D, 210T lining, polyester wadding  
 • fully padded quilted jacket • slanted zippered pockets  
 • elasticated binding on bottom hem and sleeves

BL GY N

STANDARD FIT

HALF CHEST (CM)

S	M	L	XL	2XL	3XL	4XL	5XL
52	56	60	64	68	72	76	80

**ALT-HUL**  
*Ladies Hudson Jacket*

- Fabric** 100% polyester 40D, 210T lining, polyester wadding  
 • fully padded quilted jacket • slanted zippered pockets  
 • elasticated binding on bottom hem and sleeves

BL GY N

STANDARD FIT

HALF CHEST (CM)

S	M	L	XL	2XL	3XL	4XL
50	54	58	62	66	70	74



NEXT GENERATION DIGITAL PRINT

ALT-HUD, ALT-HUL & ALT-HUK ARE AVAILABLE IN THE 3 COLOURS SHOWN ON THIS PAGE

### ALT-HUK *Kids Hudson Jacket*

- Fabric 100% polyester 40D, 210T lining, polyester wadding
- fully padded quilted jacket • slanted zippered pockets
- elasticated binding on bottom hem and sleeves

BL GY N

STANDARD FIT

HALF CHEST (CM)

AGE:	4	6	8	10	12	14
CM:	38	41	44	47	50	53





**BAS-10200**  
**Mens Crusader Bomber Jacket**

**Fabric** 100% polyester outer, 210T polyester lining, polyester wadding • metal zip pockets • full metal zip • pocket on left sleeve with metal zip and additional open pocket • knitted ribbed collar, cuffs and hem

BL MG N

HALF CHEST (CM) **STANDARD FIT**

S	M	L	XL	2XL	3XL	4XL	5XL
56	59	62	65	68	71	74	77





MEDIUM WEIGHT JACKETS

# ENJOY WARMTH & COMFORT WITH THIS CLASSIC BOMBER JACKET



## BAS-10201

### Ladies Crusader Bomber Jacket

**Fabric** 100% polyester outer, 210T polyester lining, polyester wadding • metal zip pockets • full metal zip • pocket on left sleeve with metal zip and additional open pocket • knitted ribbed collar, cuffs and hem

BL MG N

#### HALF CHEST (CM) STANDARD FIT

S	M	L	XL	2XL	3XL	4XL
51	54	57	60	63	66	69



PRICE INCLUDES EMBROIDERY. SEE PAGE 3 FOR DETAILS.



# PREMIUM COMFORT & INSULATION

## BIZ-9301

### Mens Pinnacle Softshell Jacket

**Fabric** 100% polyester softshell with bonded textured fleece lining • zip pockets • full zip • chin protector • wind placket • adjustable velcro cuffs

BL GY N

#### HALF CHEST (CM) STANDARD FIT

S	M	L	XL	2XL	3XL	4XL
56	58.5	61	63.5	66	70	78





FOR A SUBTLE BRANDING EFFECT,  
CONSIDER DEBOSSING



FOR A MODERN BRANDING EFFECT,  
CHOOSE DIGITAL PRINTING



**BIZ-9302**

Ladies Pinnacle Softshell Jacket

**Fabric** 100% polyester softshell with bonded textured fleece lining • zip pockets • full zip • chin protector • wind placket • adjustable velcro cuffs

BL GY N

HALF CHEST (CM) **STANDARD FIT**

S	M	L	XL	2XL	3XL
49	52.5	56	59.5	63	66.5



  
KING  
POWER

  
KING  
POWER



MEDIUM WEIGHT JACKETS

**JC-SL-111-A**  
Mens Nagano Softshell Jacket

**Weight** 300g/m<sup>2</sup> **Fabric** 100% polyester bonded to 100% polyester fleece  
 • zip pockets with branded zip pullers • full zip with branded zip pullers  
 • wind placket • chin protector • adjustable micro velcro cuffs • reflective Slazenger logo on centre back panel



HALF CHEST (CM) STANDARD FIT							
S	M	L	XL	2XL	3XL	4XL	5XL
54	57	60	63	66	69	72	75

**JC-SL-113-A**  
Ladies Nagano Softshell Jacket

**Weight** 300g/m<sup>2</sup> **Fabric** 100% polyester bonded to 100% polyester fleece  
 • zip pockets with branded zip pullers • full zip with branded zip pullers  
 • wind placket • chin protector • adjustable micro velcro cuffs • reflective Slazenger logo on centre back panel

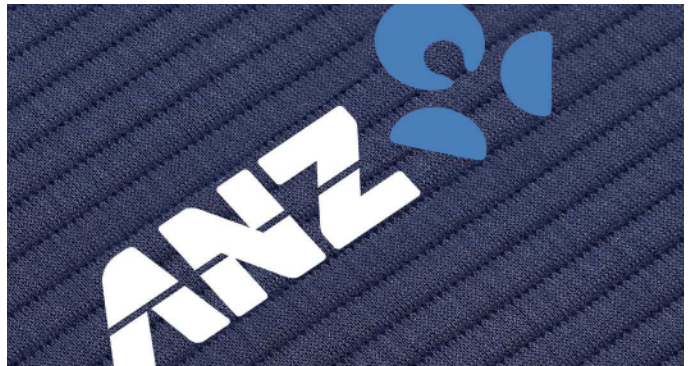


HALF CHEST (CM) STANDARD FIT						
S	M	L	XL	2XL	3XL	4XL
49	52	55	58	61	64	67

JC-SL-111-A & JC-SL-113-A ARE AVAILABLE IN THE 4 COLOURS SHOWN ON THIS PAGE



PRICE INCLUDES EMBROIDERY. SEE PAGE 3 FOR DETAILS.



FOR A MODERN BRANDING EFFECT, CHOOSE DIGITAL PRINTING

**SLAZ-11426**  
Mens Ridge Jacket

- Fabric 100% polyester • 100% polyester knit bonded with micro fleece
- mixed fabric jacket • full zip with branded zip puller • concealed pockets
- curved back panel • reflective Slazenger logo at centre back collar

BL GY N

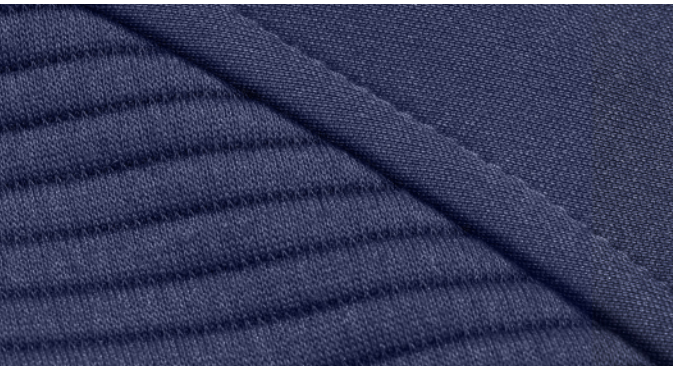
HALF CHEST (CM) STANDARD FIT

S	M	L	XL	2XL	3XL	4XL	5XL
54	57	60	63	66	69	72	75





MEDIUM WEIGHT JACKETS



**SLAZ-11427**  
Ladies Ridge Jacket

**Fabric** 100% polyester • 100% polyester knit bonded with micro fleece  
 • mixed fabric jacket • full zip with branded zip puller • concealed pockets  
 • curved back panel • reflective Slazenger logo at centre back collar

BL GY N

HALF CHEST (CM) STANDARD FIT

S	M	L	XL	2XL	3XL	4XL
49	52	55	58	61	64	67



PRICE INCLUDES DIGITAL TRANSFER OR EMBROIDERY. SEE PAGE 3 FOR DETAILS.



**SLAZ-11424**  
**Mens Astana Jacket**

- Fabric** 100% polyester • 95% polyester, 5% spandex  
 • mixed fabric jacket • zip pockets with branded zip pullers  
 • full zip with branded zip puller • chin protector • partial wind placket • elasticated binding on hem and sleeves • hood  
 • reflective Slazenger logo at back bottom hem

BL GY N

**HALF CHEST (CM) STANDARD FIT**

S	M	L	XL	2XL	3XL	4XL	5XL
54	57	60	63	66	69	72	75





MEDIUM WEIGHT JACKETS



**SLAZ-11425**  
Ladies Astana Jacket

- Fabric** 100% polyester • 95% polyester, 5% spandex  
 • mixed fabric jacket • zip pockets with branded zip pullers  
 • full zip with branded zip puller • chin protector • partial wind  
 placket • elasticated binding on hem and sleeves • hood  
 • reflective Slazenger logo at back bottom hem

BL GY N

HALF CHEST (CM) **STANDARD FIT**

S	M	L	XL	2XL	3XL	4XL
50	53	56	59	62	65	68





**BIZ-6500**  
Mens Geneva Softshell Jacket

**Weight** 240g/m<sup>2</sup> **Fabric** 100% breathable polyester bonded with contrast textured micro-ribbed fleece • windproof and water repellent  
 • pockets with contrast zips and pullers • full zip with contrast puller  
 • contrast chin protector and wind placket • contrast bonded interior fleece • adjustable velcro cuffs



HALF CHEST (CM) **STANDARD FIT**

S	M	L	XL	2XL	3XL	4XL
57	59	61	63	65	70	78



# HIGHLIGHT YOUR BRAND THIS WINTER

MEDIUM WEIGHT JACKETS



## BIZ-6501 Ladies Geneva Softshell Jacket

**Weight** 240g/m<sup>2</sup> **Fabric** 100% breathable polyester bonded with contrast textured micro-ribbed fleece • windproof and water repellent • pockets with contrast zips and pullers • full zip with contrast puller • contrast chin protector and wind placket • contrast bonded interior fleece • adjustable velcro cuffs



HALF CHEST (CM) **STANDARD FIT**

S	M	L	XL	2XL	3XL
49	52.5	56	59.5	63	66.5





FOR A SUBTLE BRANDING EFFECT, CONSIDER DEBOSSING



# Maxson Softshell Jacket

Designed for movement while providing protection from the elements, the Maxson features a waterproof, breathable 3-layer construction, as well as ergonomic sleeves and articulated elbows for a superior fit.



WATERPROOF



3 LAYER BONDED



STRETCH



SHIELDTECH

ELE-7304 & ELE-7305 ARE AVAILABLE IN THE 4 COLOURS SHOWN ON THIS PAGE

ELE-7304

## Mens Maxson Softshell Jacket

**Weight** 270g/m<sup>2</sup> **Fabric** 100% mechanical stretch woven bonded to 100% polyester, anti-pill treated micro fleece  
**lining:** 100% polyester brushed tricot knit • concealed zip pocket • full zip with branded zip puller • wind placket • hidden inner pockets • adjustable velcro cuffs

BL BU GY N

HALF CHEST (CM) STANDARD FIT

S	M	L	XL	2XL	3XL	4XL
54	57	61	65	68.5	74	79





FOR A MODERN BRANDING EFFECT, CHOOSE DIGITAL PRINTING

ELE-7305

### Ladies Maxson Softshell Jacket

**Weight** 270g/m<sup>2</sup> **Fabric** 100% mechanical stretch woven bonded to 100% polyester, anti-pill treated micro fleece  
 • **lining:** 100% polyester brushed tricot knit • concealed zip pocket • full zip with branded zip puller • wind placket  
 • hidden inner pockets • adjustable velcro cuffs

BL BU GY N

HALF CHEST (CM) **STANDARD FIT**

S	M	L	XL	2XL	3XL
50	53.5	57	61	65	68.5

PRICE INCLUDES DEBOSSING, DIGITAL TRANSFER OR EMBROIDERY. SEE PAGE 3 FOR DETAILS.



NEW



REFLECTIVE BLACK KNIGHT LOGO ON BACK OF COLLAR



REFLECTIVE BLACK KNIGHT LOGO ON BACK OF COLLAR



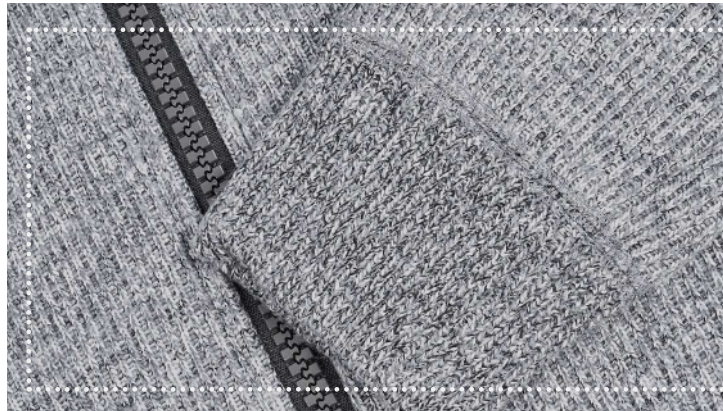
### JC-GP-116-A Unisex Ohio Knitted Jacket

- Fabric** 100% knitted polyester bonded to 100% polyester fleece
- nylon collar with reflective Black Knight logo
  - slanted pockets with hidden zips
  - chunky full zip with branded zip puller
  - ribbed waistband and cuffs

BL GY N

HALF CHEST (CM) L STANDARD FIT • M STANDARD FIT

S	M	L	XL	2XL	3XL	4XL	5XL
51	54	57	60	63	66	69	72



FOR A TRADITIONAL BRANDING EFFECT, SELECT EMBROIDERY



# Scotia Light Down Jacket

High-tech minimalism can go a long way, especially when it looks this good. With its lightweight, compactability and multi-pocket design, the Scotia offers active people a versatile and stylish apparel solution.



BREATHABLE



WATER REPELLENT



THERMALTECH



reddot design award