



articulmedia

articulmedia



HEAVYWEIGHT JACKETS

Ideal for winter, this range includes a selection of padded Heavyweight Jackets, designed to keep you warm on those cold winter days.




DRAGON
SECURITY



DETACHABLE ZIP-OFF HOOD

SENTRY PARKA JACKET

ALT-1700

Fabric 70D / 190T 100% polyester, padded and lined in quilted Tafetta

Description detachable hood with drawcord and toggles • concealed zip features storm flap with press stud closure • inner pocket • open end sleeve with knitted inner cuff • two bottom patch pockets with press stud closure flap • jacket features chest patch pocket with press stud closure flap • eyelets under arms • shoulder epaulettes with press studs

Colours BL N OL

CHEST (CM)

SIZE	S	M	L	XL	2XL	3XL	4XL	5XL
CM	118	126	134	142	150	158	166	174



SHOULDER EPAULETTES



QUILTED TAFETTA LINING



OPEN END SLEEVE

KNITTED INNER SLEEVE CUFF







SHIFT SINGLE-LINED FREEZER JACKET

ALT-1800

Fabric shell: 105g/m², 100% polyester Oxford • inner: 180g/m², 100% polyester quilted Pongee

Description hooded • monza style chest pocket • two monza style bottom pockets • elasticated cuffs • rated to work in environments as low as -5 degrees celsius

Colours N

HALF CHEST (CM)

SIZE	S	M	L	XL	2XL	3XL	4XL	5XL
CM	62.5	65	67.5	70	72.5	75	77.5	80



ELASTICATED CUFFS →

PRICE INCLUDES EMBROIDERY. SEE PAGE 3 FOR DETAILS.

FOR MAXIMUM PROTECTION PAIR THE SHIFT SINGLE-LINED FREEZER JACKET WITH THE SHIFT SINGLE-LINED FREEZER PANTS



SHIFT SINGLE-LINED FREEZER PANTS

ALT-1801

For full product details, see page W 117



TAYLOR FISH COMPANY



ARCTIC DOUBLE-LINED FREEZER JACKET

ALT-1802

Fabric shell: 105g/m², 100% polyester Oxford • padding: 250g/m², 100% polyester wadding • lining: 190g/m², 80% polyester 20% cotton twill

Description hooded • monza style chest pocket • two monza style bottom pockets • elasticated cuffs • rated to work in environments as low as -15 degrees celsius

Colours N

HALF CHEST (CM)

SIZE	S	M	L	XL	2XL	3XL	4XL	5XL
CM	65	67.5	70	72.5	75	77.5	80	82.5

ELASTICATED CUFFS →

PRICE INCLUDES EMBROIDERY. SEE PAGE 3 FOR DETAILS.

FOR THE RIGHT GEAR TO KEEP YOU WARM, PAIR THE ARCTIC DOUBLE-LINED FREEZER JACKET WITH THE ARCTIC DOUBLE-LINED FREEZER PANTS



ARCTIC DOUBLE-LINED FREEZER PANTS

ALT-1803

For full product details, see page W 119





HEAVYWEIGHT JACKETS



ALT-HMM
Mens Hamilton Jacket

Fabric 100% polyester with PVC coating, polar fleece lining, polyester wadding • fully padded jacket with hood
• elasticated cuffs • inner chest pocket • welt pockets

BL KH N

STANDARD FIT

HALF CHEST (CM)

S	M	L	XL	2XL	3XL	4XL	5XL
55	58	61	64	67	70	73	76



HEAVYWEIGHT JACKETS



ALT-HML

Ladies Hamilton Jacket

Fabric 100% polyester with PVC coating, polar fleece lining, polyester wadding • fully padded jacket with hood • elasticated cuffs • inner chest pocket • welt pockets

BL KH N

STANDARD FIT

HALF CHEST (CM)

S	M	L	XL	2XL	3XL	4XL
53	56	59	62	65	68	71





HEAVYWEIGHT JACKETS



PADDED FOR EXTRA WARMTH ON A CHILLY DAY

BAS-7782 Mens Rego Jacket

- Fabric:** 100% peached polyester • **lining:** 100% polyester taffeta
- padding:** 100% polyester • padded outer • slanted welt pockets
- full zip • wind placket

BL KH N

HALF CHEST (CM) STANDARD FIT

S	M	L	XL	2XL	3XL	4XL	5XL
57	60	63	66	69	72	75	78





BAS-7783

Ladies Rego Jacket

- **Fabric** 100% peached polyester • **lining:** 100% polyester taffeta
- **padding:** 100% polyester • padded outer • slanted welt pockets
- full zip • wind placket

BL KH N

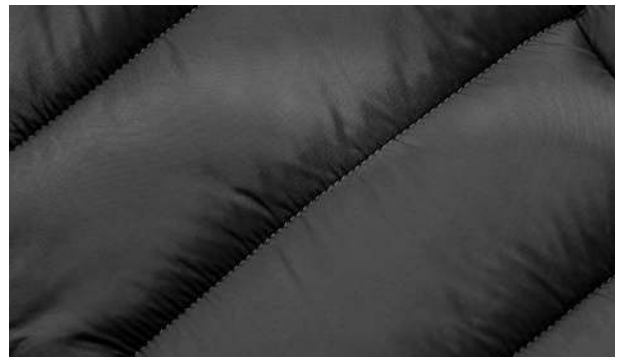
HALF CHEST (CM) STANDARD FIT

S	M	L	XL	2XL	3XL	4XL
50.5	53.5	56.5	59.5	62.5	65.5	68.5





HEAVYWEIGHT JACKETS



BAS-11212
Mens Vallarta Jacket

Fabric 100% nylon • **lining:** 100% polyester • **padding:** polyester
• fully padded and quilted outer • full zip • concealed pockets

BL GY N

HALF CHEST (CM) **STANDARD FIT**

S	M	L	XL	2XL	3XL	4XL	5XL
55	58	61	64	67	70	73	76





BAS-11213

Ladies Vallarta Jacket

- **Fabric** 100% nylon • **lining:** 100% polyester • **padding:** polyester
- fully padded and quilted outer • full zip with dual zip pullers
- concealed pockets • extra length

BL GY N

HALF CHEST (CM) **STANDARD FIT**

S	M	L	XL	2XL	3XL	4XL
49	52	55	58	61	64	67



PRICE INCLUDES EMBROIDERY. SEE PAGE 3 FOR DETAILS.



articul media

articul media

NEW



HEAVYWEIGHT JACKETS

DETACHABLE HOOD ON MENS & LADIES JACKETS

JC-SL-107-A
Mens Kyoto Jacket

Fabric 100% nylon • **lining:** 100% polyester • **padding:** polyester • fully padded quilted outer and lining • slanted zip pockets with branded zip pullers • full zip with branded zip pullers • chin protector • partial wind placket • inner pocket • elasticated binding on hem, sleeves and hood • detachable hood • reflective Slazenger logo on back panel

BL N

HALF CHEST (CM) **STANDARD FIT**

S	M	L	XL	2XL	3XL	4XL	5XL
54	57	60	63	66	69	72	75



JC-SL-108-A
Ladies Kyoto Jacket

Fabric 100% nylon • **lining:** 100% polyester • **padding:** polyester • fully padded quilted outer and lining • slanted zip pockets with branded zip pullers • full zip with branded zip pullers • chin protector • partial wind placket • inner pocket • elasticated binding on hem, sleeves and hood • detachable hood • reflective Slazenger logo on back panel

BL N

HALF CHEST (CM) **STANDARD FIT**

S	M	L	XL	2XL	3XL	4XL
48	51	54	57	60	63	66



PRICE INCLUDES EMBROIDERY. SEE PAGE 3 FOR DETAILS.





HEAVYWEIGHT JACKETS

DETACHABLE HOOD ON MENS & LADIES JACKETS

SLAZ-11422

Mens Kyoto Two-Tone Jacket

Fabric 100% nylon • **lining:** 100% polyester • **padding:** polyester
 • fully padded quilted outer and lining • slanted zip pockets with branded zip pullers
 • full zip with branded zip puller • chin protector • partial wind placket • inner pocket
 • elasticated binding on hem, sleeves and hood • detachable hood • reflective Slazenger logo on contrast back panel



HALF CHEST (CM) STANDARD FIT

S	M	L	XL	2XL	3XL	4XL	5XL
54	57	60	63	66	69	72	75



SLAZ-11423

Ladies Kyoto Two-Tone Jacket

Fabric 100% nylon • **lining:** 100% polyester • **padding:** polyester
 • fully padded quilted outer and lining • slanted zip pockets with branded zip pullers
 • full zip with branded zip puller • chin protector • partial wind placket • inner pocket
 • elasticated binding on hem, sleeves and hood • detachable hood • reflective Slazenger logo on contrast back panel



HALF CHEST (CM) STANDARD FIT

S	M	L	XL	2XL	3XL	4XL
48	51	54	57	60	63	66





MetLife

MetLife



Utah Jacket

Innovative design and superior quality finishes combine to create a modern, versatile and functional jacket that is incredibly warm and comfortable. The durable Nylon fabric is water repellent, wind resistant, quick drying and easy to maintain.



WIND RESISTANT



WATER REPELLENT

JC-EL-109-A

Mens Utah Jacket

Fabric 100% nylon • **lining:** 100% polyester • **padding:** polyester • fully padded quilted outer and lining • slanted zip pockets with branded zip pullers • full zip with branded zip puller • partial wind placket • inner pockets • elasticated binding on hem and sleeves

BL DG2 N

HALF CHEST (CM) **RELAXED FIT**

S	M	L	XL	2XL	3XL	4XL	5XL
57	60	63	66	69	72	75	78

JC-EL-110-A

Ladies Utah Jacket

Fabric 100% nylon • **lining:** 100% polyester • **padding:** polyester • fully padded quilted outer and lining • slanted zip pockets with branded zip pullers • full zip with branded zip puller • partial wind placket • inner pockets • elasticated binding on hem and sleeves

BL DG2 N

HALF CHEST (CM) **RELAXED FIT**

S	M	L	XL	2XL	3XL	4XL
51	54	57	60	63	66	69





ELE-7306 & ELE-7307 ARE AVAILABLE IN THE 2 COLOURS SHOWN ON THIS SPREAD



ELE-7306

Mens Norquay Insulated Jacket

Fabric 100% polyester 210T, woven with water resistant coating and water repellent finish • **lining**: 100% polyester 290T
 • **filling**: 100% polyester faux-down • padded and quilted outer and lining • zip pockets with branded zip pullers • full zip with branded zip puller • chin protector • wind placket • quilted hood • elasticated binding on hood, cuffs and hem

BL N

HALF CHEST (CM) **STANDARD FIT**

S	M	L	XL	2XL	3XL	4XL
55.5	58.5	62.5	66	70	75	80

PRICE INCLUDES EMBROIDERY. SEE PAGE 3 FOR DETAILS.



Norquay Insulated Jacket

Combining warmth and trendy styling, the Norquay provides protection from the elements with 100% polyester faux-down insulation, an attached hood, interior storm flap and water repellent finish. With its retail look and logo-friendly back-shoulder panel, the Norquay will command attention for any brand.



WATER REPELLENT



THERMALTECH

ELE-7307

Ladies Norquay Insulated Jacket

Fabric: 100% polyester 210T, woven with water resistant coating and water repellent finish • **lining:** 100% polyester 290T • **filling:** 100% polyester faux-down • padded and quilted outer and lining • zip pockets with branded zip pullers • full zip with branded zip puller • chin protector • wind placket • quilted hood • elasticated binding on hood, cuffs and hem

BL N

HALF CHEST (CM) **STANDARD FIT**

S	M	L	XL	2XL	3XL
50	53.5	57	61	65	68.5



ELE-11500

Mens Montana Jacket

Fabric 100% polyester • **lining**: 100% polyester
 • **padding**: polyester • fully padded and quilted outer
 • full zip with branded zip puller • storm flap
 • chin protector • knitted storm inner collar
 • styled welt pockets • elasticated hem insert for snug fit • hood • rubber eyelets on pockets and hood • inner pocket

BL MG N R

HALF CHEST (CM) STANDARD FIT

S	M	L	XL	2XL	3XL	4XL	5XL
58	61	64	67	70	73	76	79



Montana Jacket

Made from 100% quilted and padded polyester the Montana Jacket features a knitted inner storm collar, full storm flap and elasticated hem inserts to ensure maximum protection from the elements.



WIND
RESISTANT



WATER
REPELLENT



ELE-11501

Ladies Montana Jacket

Fabric: 100% polyester • **lining:** 100% polyester
 • **padding:** polyester • fully padded and quilted outer
 • full zip with branded zip puller • storm flap
 • chin protector • knitted storm inner collar
 • styled welt pockets • elasticated hem insert for snug fit • hood • rubber eyelets on pockets and hood • inner pocket

BL MG N R

HALF CHEST (CM) **STANDARD FIT**

S	M	L	XL	2XL	3XL	4XL
51	54	57	60	63	66	69





REMOVABLE HOOD ON MENS & LADIES JACKETS

ELE-4028

Mens Balkan Insulated Jacket

Fabric outer: 100% polyester, oxford fabric with water repellent finish • **lining:** 100% polyester taffeta body, sleeves and hood • concealed zip pockets with branded zip pullers • full zip with branded zip puller • storm flap with velcro tabs and press studs • slanted zip pocket on chest with branded zip puller • inner pocket with velcro closure • detachable hood with adjustable toggles • adjustable hem toggles • concealed knitted storm cuffs

BL BU

HALF CHEST (CM) STANDARD FIT

S	M	L	XL	2XL	3XL	4XL
58.5	61.5	65	68	71	74.5	77.5

ELE-4029

Ladies Balkan Insulated Jacket

Fabric outer: 100% polyester, oxford fabric with water repellent finish • **lining:** 100% polyester taffeta body, sleeves and hood • concealed zip pockets with branded zip pullers • full zip with dual branded zip pullers • storm flap with velcro tabs and press studs • inner pocket with velcro closure • detachable hood with adjustable toggles • concealed knitted storm cuffs with thumb exits

BL BU

HALF CHEST (CM) STANDARD FIT

S	M	L	XL	2XL	3XL
54	57	60.5	63.5	66.5	70

PRICE INCLUDES EMBROIDERY. SEE PAGE 3 FOR DETAILS.